

SMART HOME TECHNOLOGY



SMART HOME HUB

QUADROBASE



The QUADROBASE HUB is the master device in the home automation system management and allows it to be expanded by any devices that have the appropriate interface connector, wireless interface or infrared port.

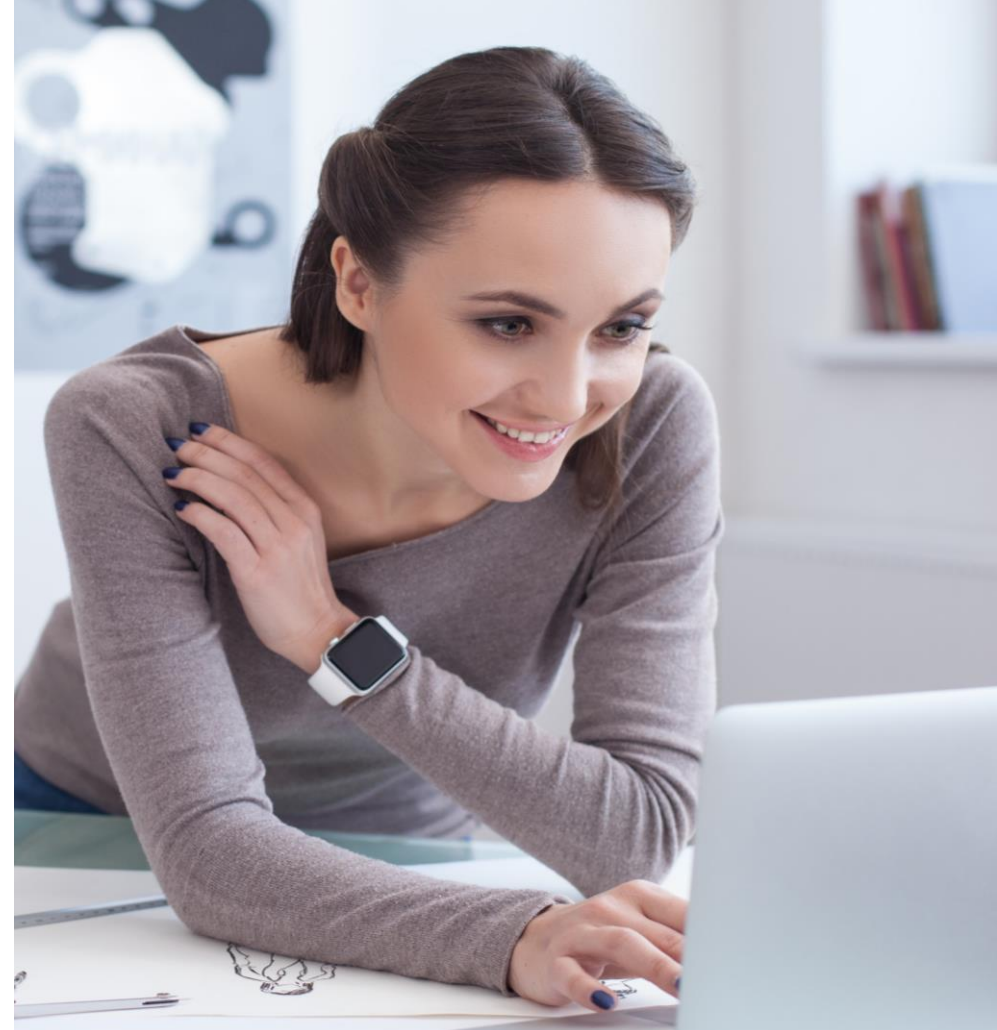
The HUB has a direct WI-FI connection to the cloud, where the collected data from the sensors are processed and pre-programmed scenarios are applied.

Due to this, the consumer can perform control and management using a tablet, smartphone, computer - at home or remotely (at work, on a business trip, etc.) wherever Internet connection is available.

It has Wi-Fi, GSM, 433MHz, E-bus (for boilers) and IR modules on board and supports protocols for ZigBee, Z-wave, Bluetooth devices via additional modules

Thanks to GPRS connection the system works even if Wi-Fi internet is not available.

In case of absence of all connections the system keeps managing and control all the devices in any case.



 quadrobit

Wi-Fi Module

- 802.11 b/g/n 2.4 GHz
- Wi-Fi modes: client, access point
- The maximum output of Wi-Fi: 19.5 dB · mW (89 mW)

Radio Module (RF)

- Nominal frequency: 433.9 MHz, (315 MHz for USA, China markets)
- Possible frequency: from 240 to 930 MHz
- Nominal modulation: ASK/OOK
- Possible modulations: FSK, GFSK, KLO
- Response level: -121 dBm
- Maximum power: 20 dBm
- Reactive antenna resistance: 50 Ohm

IR transmitter / receiver (IrDA)

GSM/GPRS Module

- Operating band EGSM900, DCS1800, GSM850, PCS1900
- Transmit power DCS1800, PCS1900: 1 W
- Transmit power GSM850, EGSM900: 2 W
- Networking standard: 2G
- Sending and receiving GPRS data
- Support SIM card with support for 3V and 1.8V

E-BUS Module (Boiler & Climate Control)

- Bus voltage: 8 to 24V
- Transmission speed 2400 baud
- Modes: guest, administrator



SMART HOME HUB

QUADROBASE



SMART HUB ALLOWS TO CONNECT THE FOLLOWING DEVICES:

- Various sensors (temperature, humidity, light intensity, atmospheric pressure, gas, smoke, door / window opening, motion detector, water leakage, etc., including the QB METEO meteorological station and all available optional modules)
- Controlled connectors and switches
- Gas and water valves
- Water and energy meters
- IP cameras (controlled by a wireless interface)
- Sirens, alarm buttons
- Control units for gates, window curtains
- Various remote controls
- Devices with IR-control
- Lighting fixtures (including dimmers and LED strips)
- Heating devices (boilers, pumps controlled by the E-BUS channel)

- Number of connected meteo stations up to 16
- Power consumption: up to 2 A
- External I2C ports: 3 pcs
- Operating temperature: 5°C to 70°C
- Operating Humidity ≤ 95% RH (without condensation)
- Power: micro USB
- Number of connected devices up to 100 through external I2C ports
- Operating voltage: 5 V
- Size (L*W*H), mm: 66*66*30

METEO STATION SENSOR 4-in-1

QB METEO



Meteo station QB METEO constantly monitors the air temperature, humidity, ambient pressure and the level of illumination in your home or office. Together with other Quadrobit devices, it becomes a powerful tool in the smart house system.



The temperature sensor will allow you to adjust the microclimate for every need. With QUADROBASE HUB, simply set the scenario and the weather station will monitor the set room temperature.



A humidity sensor in combination with an air conditioner and/or a humidifier will help to keep the most comfortable level of humidity in the room.



Using the light level sensor in combination with Quadrobit devices, you can create dynamic lighting scenarios in the room in daylight or in the evening.



The ambient pressure sensor allows you to get real-time weather information. You can plan what to wear, take an umbrella or put on the sunglasses

- Current consumption: >1 A
- External I2C ports: 1 pcs
- Operating temperature: 0°C to 70°C
- Size (L*W*H), mm: 66*66*30
- Operating relative humidity ≤ 95%
- Operating voltage: 5 V
- Power:: 2xAA or micro USB or external I2C port



 quadrobit

CONTROLLER with built-in heating control module

QUADROBASE



The QUADROBASE controller is developed with the part of a hardware implementation of the E-BUS, which is the technical industry-standard for the management of climate and power equipment: gas, electric, solid fuel, etc. boilers, heat pumps, solar systems, boilers, air conditioning and air purification systems.

The equipment is connected with the help of a standard two-wire cable, sufficient to control the E-BUS with 24V power supply. The data transfer rate in the bus is 2400 baud. Connection to the server is proceeded via Wi-Fi, the settings are automatically synchronized with the cloud system, but the configured modes of operation can be stand-alone, without the Internet. The program part of the module currently supports the command system of the company "Ariston", in the process of implementing the management team "Bosch", "Buderus", "Vaillant", etc.

Module supports several modes of operation:

- emulation of the producer original control panel (replacement of the control panel and management of all parameters from the controller (or via the Internet from a personal account));
- remote control panel (mode in which control can be performed by the original control panel or device connected to the controller, while the climate devices are controlled via another controller accessible via the Internet on a cloud server)

Possible scenarios of use:

- managing the pool of devices from a single interface, setting parameters (mobile application or personal account);
- view and configure, reboot devices if necessary, when errors occur;
- monitoring and response to malfunctioning, remote error correction of devices by the service department.



 quadrobit



IR transmitter (IrDA)

QB INFRARED

The IR transmitter module together with the HUB manages all compatible devices using this technology for transmitting commands and signals, for example, to air conditioners and TVs



Z-Wave MODULE

QB Z-WAVE

Z-Wave module allows the HUB to connect all third-party sensors that use Z-Wave technology. Now you can purchase any sensors that fit your interior and connect to the QuadroBit smart home system, which greatly expands your possibilities for design solutions



POWERBANK

QB POWERBANK

The module with 5000 mAh standby power supply, connected to the system via QB Connect* technology, allows the system to work even if your home has lost electricity for up to 50 hours in the offline mode. All modules connected to the system will be supplied with power. All signals received from wireless sensors on batteries will be processed and, if necessary, you will learn about the status of the system via SMS, call or personal account



ZigBee MODULE

QB ZIGBEE

The ZigBee module allows the HUB to communicate with all devices that support ZigBee, and integrate them into a single unified smart home automation system. As long as most smart energy meters support ZigBee, the QuadroBit system becomes even more interesting for consumers, telecommunications and utilities for integration smart applications

INTERNAL IP CAMERA

QB CAMIN-2



This P2P IP camera has a wide 360° viewing angle for indoor video surveillance. Even a beginner can use this camera. With an intuitive interface, the camera is easy to manage with the Quadrobit application on iOS, Android, or Windows 10. Video and audio signals are so clear that you can see and hear everything that's going on in your room in detail. The HD camera transmits a high definition resolution video stream, which can be stored on an SD card or Quadrobit cloud service, which will prevent unauthorized access to your archive.

The dual channel audio channel allows you not only to hear, but also to talk to those in the room using the microphone and speaker.

- Viewing angle 360 degrees
- Night vision
- MicroSD card slot
- Plug-and-play installation
- 720p HD video stream
- Wi-Fi connection technology
- Two Way Audio: Speakers and Microphone
- Compatible with iOS, Android and Windows 10
- Push notifications and motion detection
- Power: micro-USD, 2 A, 5 V
- Power supply unit: 230 V



quadrobit





INDOOR IP CAMERA 360°

QB CAM360-1



This IP camera P2P with a wide 360° viewing angle is for indoor video surveillance. Thanks to an intuitive interface, the camera is easily controlled using the Quadrobit application on iOS, Android or Windows 10.

Video and audio signals are so clear that you can see and hear everything that happens in your room, in detail.

Video can be recorded on a memory card or a cloud-based Quadrobit service according to your settings and scripts created in your personal account.

 quadrobit

- Power supply: DC 12 V (not included)
- Resolution: 1.3Mp/3Mp camera
- Lens: 1.44 mm
- Viewing angle: 360°
- Day/Night mode: Auto
- Electronic PTZ horizontal: 0°~360°, vertical: 90°~ 90°
- Min Illumination: 0.02Lux @ (F2.0, AGC ON), 0.Lux with IR
- Video Compression: H.264
- Wireless Network Protocol: Wi-Fi (IEEE802.11b)
- Storage: Maximum 32G Micro SD card (not included) or cloud
- IR distance: 5-10 m
- Power Consumption: 3 W (MAX)
- Working environment: -10°C-50°C, 95% relative humidity
- Product Size (L*W*H): approx. 16.5*15.5*4 cm

IP CAMERA OUTDOOR

QB CAMOUT-1



A multifunctional IP camera is designed for outdoor use. The camera ensures high-resolution video transmission. Connecting to a network, the camera provides high-quality video transmission via the Internet. The infrared filter turns on automatically, which allows the camera to receive a clear color image during daytime recording and a black and white video picture in poor lighting at night.

- 360 degree viewing angle
- 1080p HD video stream 2.1 MP
- Wi-Fi connection technology
- Plug-and-play installation
- Compatible with iOS, Android and Windows 10
- Push notifications and motion detection
- Night vision
- Water Protection: IP 66



quadrobit

WIRELESS DOOR AND WINDOW OPENING SENSOR

QB OPEN-1



The battery powered wireless door/window sensor is designed to detect the opening of doors, windows, hatches, gates. The sensor consists of a magnet and a sensor (reed switch), which determines the change in the magnetic field. When the magnet moves away from the sensor, the detector detects the change and sends a signal to the device to which it is connected.

The sensor has an optimal size compared to analogs, since it has a built-in antenna of increased size for greater range and quality of signal transmission, as well as a battery that is available at an affordable price in any supermarket.

 quadrobot

- Transmission distance (open area): up to 50 m on open space
- Transmission Frequency: 433 MHz
- Operating voltage: 12 V, A23
- Dimensions (L*W*H), mm: 76*37*17
- The size of the magnet (D*W*B), mm: 55*13*20

WIRELESS PIR MOTION SENSOR

QB PIR-1



The battery powered wireless motion sensor is designed to detect the movement of a person in a guarded room. The PIR sensor uses the technology of digital infrared control with flexible logic and intelligent analysis algorithms, which allows distinguishing signals of interference from human body signals.

This allows you to effectively avoid false alarms. Built-in spiral high-frequency antenna allows increasing the operational range. The sensor is reliable and easy to install.

Indicator light:

LED indicator flashes once: alarm

LED indicator lights for a long time: low charge, change the batteries

- Power supply: 2 pcs AAA batteries
- Standby consumption: $\leq 50 \mu\text{A}$
- Consumption in active mode: $\leq 20\text{mA}$
- Radius of motion detection: 8m / 110°
- Distance for signal transmission: up to 50 m on open space
- Transmission Frequency: 433 MHz
- Body material: ABS plastic
- Operating Humidity: $\leq 80\%$ (condensation not allowed)



 quadrobot



WIRELESS WATER SENSOR

QB WATER-1



The wireless water sensor will recognize a leak at an early stage and instantly send a signal to the main device.

In combination with the remotely operated water valve Quadrobit QB VALVE-1 according to the pre-set scenario in your personal account, you can automatically shut off the water supply in the apartment or house, thereby preventing flooding the apartment, house and neighbors below.

Also, the Quadrobit smart home system can turn on the light, turn on the alarm, video cameras or other system devices automatically by the water leakage signal. Directly from the application, you can control the sensor status wherever you are.

The battery powered sensor is installed very easily in any hard-to-reach places and

- Operating voltage: 12 V, A23
- Consumption in sleep mode: <2 uA
- Consumption in the active mode: <70 mA
- Transmission frequency: 433 MHz
- Wireless distance (open area): up to 50 m on open space
- Types of alerts: leakage message, tamper message



 quadrobit



WIRELESS WATER VALVE



QB VALVE-1



This device is designed for remote opening or closing of water supply in an apartment or house through the application Quadrobit. In case of an accident, according to the scenario in the personal account, the tap faucet will close automatically on the signal from the flood sensor QB WATER and the system will notify you on the phone. The valve has the minimum dimensions, which will allow installation in the most inaccessible places.



quadrobit

- | | |
|-------------------------|---------------------------------------|
| ▪ Device | Water valve |
| ▪ Type | Wired |
| ▪ Outdoor usage | no |
| ▪ Tap size | ½ inch |
| ▪ Pipe diameter | ½ inch |
| ▪ Material of the tap | brass |
| ▪ Working pressure | <200 kPa |
| ▪ Operating voltage | 12 V |
| ▪ Operating temperature | 5-70° C |
| ▪ Control | power supply unit QB POWER-1 (433Mhz) |

WIRELESS POWER SOCKET

QB SOCKET-1



Wireless socket QB SOCKET-1 is designed for remote control of electrical appliances (boiler, table lamp, electric battery, etc.) in home or office and prevent accidents.

- Communication standard: 433Mhz
- Wireless transmission range: up to 50 m on open space
- Interaction of devices without a controller: no
- Possibility of supporting scenarios: no
- Control via: Android application, iOS app
- Standard plug: European
- Connector type: European
- Limiting load power: <2.2 kW
- Material: plastic
- Protection class: IP44
- Power type: 220 V network
- Power supply voltage: 220-240 V
- Operating temperature range: 5° C to +70° C
- Operating humidity: not more than 90%



 quadrobit

HEATING FLOOR CONTROLLER

QB FLOOR-1



QB FLOOR-1 is a device capable automatically maintain a preset temperature mode in accordance with your settings in the personal account, using the indications of the weather station QB METEO-1. It has additional functions that allow you to set the individual mode of operation.

Quadrobit programmers support remote floor control via the Internet, so you can manage the floor heating using the Quadrobit application on your smartphone. You can turn on the heating or select the temperature mode using a smartphone. The installation of a programmable thermostat on average reduces the cost of electricity to about 30-50%



 quadrobit

- Power supply voltage: 85 ... 250 V, 50/60 Hz
- Active load: Max. 16 A / 3680 W at 230 V
- Regulating ranges floor temperature: + 5° C... +45° C
- Air temperature: +5° C...+35° C
- Temperature calibration: ±10° C
- Ambient temperature -10° C...+60° C
- Monitoring and fault indication: Yes
- Protection body class IP 30
- Body Material: Impact-resistant, flame-retardant
- Frost protection mode: Yes, the room temperature is maintained at +5° C... 35° C
- Child lock mode (key lock): Yes
- Timer heating control: Intelligent timer, comfortable heating and energy-saving mode

WIRELESS HEATING REGULATOR

QB RADIATOR-1



The wireless heating regulator is a self-inclusive intelligent electronic and programmable thermal head for use in the domestic environment. It's easy to install and operate, control is proceeded with only three buttons. The regulator measures the temperature with the help of two built-in sensors: one behind the display and one next to the valve. Based on the temperature readings, it accurately monitors the actual room temperature. Using with Quadrobit controllers, it can be part of any automation scenario created using scripts in a personal online office.

- Illuminated display
- Protection against freezing
- Child proof
- Minimum / maximum temperature limitation
- Adaptive Learning
- Battery life 2 years
- Weekly scenarios with adjustable temperature settings
- Easy installation
- Controlled by the QUADROBASE HUB



 quadrobit



REMOTE-CONTROLLED SENSOR SWITCH



QB SWITCH-1SW / QB SWITCH-1SB
QB SWITCH-2SW / QB SWITCH-2SB
QB SWITCH-3SW / QB SWITCH-3SB

W- white
B - black

The sensor switches QB SWITCH with one, two and three buttons are designed for both manual and remote switching of one, two, three lighting zones.

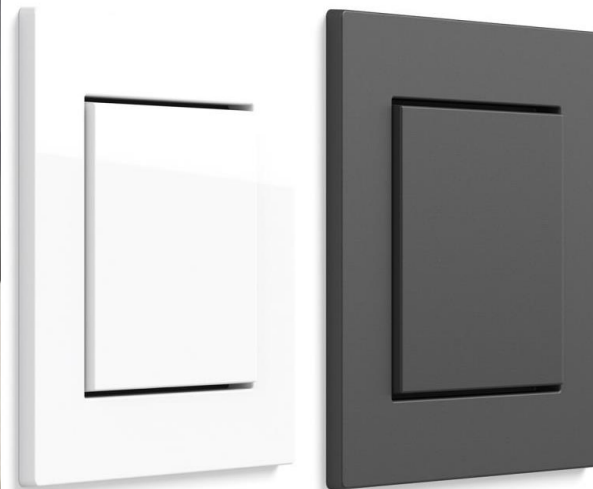
 quadrobit

- Wireless standard: 433 MHz
- Operating Humidity: ≤85%
- Maximum power: 7-200W per button (up to 100W for LED lamps)
- Standard: Euro
- Power supply: 170-240V, 50/60 Hz
- Size (L*W*H), mm: 85*85*35
- Color: white and black
- Management capabilities: Touch and remotely

REMOTE-CONTROLLED WIRELESS SWITCH

QB SWITCH-1W / QB SWITCH-1B
QB SWITCH-2W / QB SWITCH-2B
QB SWITCH-3W / QB SWITCH-3B

W – белый
B – черный



One, two and three-channel key switches QB SWITCH are designed for manual and remote switching on and off of one / two / three lighting zones. This type of switches is not supposed to be built into the wall, but is installed on top of any flat convenient for you surface, using flat invisible fasteners or double-sided adhesive tape. It works in tandem with a remote relay, which is a breaker for the mains voltage.

- Working distance: up to 50m for open space
- Power Mode: Self-Generating
- Communication mode: GFSK
- Size (L*W*H), mm: 86*86*15
- Frequency: 433 MHz, 866 MHz
- Service life: 200 000 switchings
- Ambient temperature: 5°C-50 °C

Compatible with relays
QB RELAY-1
QB RELAY-2
QB RELAY-3



 **quadrobit**

LIGHTING CONTROL RELAY

- QB RELAY-1 (1 loop)
- QB RELAY-2 (2 loops)
- QB RELAY-3 (3 loops)



The Quadrobit relays allow you to control the wall switch, the lighting zone or the built-in socket using the QUADROBASE HUB. This small module is installed in the electrical box behind your switch/socket, namely the breaking of the wire circuit of the power supply socket. When the module is installed, the wall switch will work as before from the hand (mechanically) and from the Quadrobit application in your phone.

- Power type: 110~220 V, 50/60 HZ
- Voltage in the range: 85-265 V
- Power control: <2200 W (impedance load)
- Communication mode: GFSK
- Operating frequency: 433 MHz, 866 MHz
- Full-load amperage: 10 A
- Max. Voltage: 265 V
- Maximum power: 2200 W
- Size (L*W*H), mm: 67*32*27



 quadrobit



ENTRANCE LOCK

QB LOCK-1



A stylish biometric fingerprint lock will be an ornament of any interior, whether it is an office door or a country house. Access to the premises can be done by fingerprint, radio keychain, personal code, mechanical key or smartphone. To enter the room you need to attach a fingerprint, leaving the room free by pressing the lock handle down.

There are mechanical keys for emergency door unlocking. The lock can have memory for event passes, for later viewing on the computer.

 quadrobit

- Number of prints: 500
- Number of passwords: 100
- Number of passes: 30000
- Sensor: ZK optical, 500 DPI
- Operating temperature: 0 - + 45 C
- Power: 4 batteries 1.5V AA
- Size (L*W*H), mm: 328*72*38 (front)
- Access methods: Smartphone, fingerprint, remote keychain, code, mechanical key
- Operating time of one set of batteries more than 5000 openings
- The lifetime of the lock is more than 200 000 openings

SOUND-AND-LIGHT SIREN

QB SIREN-1



The QB SIRENA-1 for indoor usage is a high-quality sound siren, designed by company QuadroBit.

Despite the low price, the siren has a high-quality performance and good sound power, comparable to similar, but more expensive solutions. We recommend the siren for indoor usage as a basis for warning inside the premises. Its strength of sound is capable not only to alert those persons responsible for the safety, but also to make the criminal panic.

- Alert type: light and sound
- Installation type: outdoor
- Connection type: wired
- Acoustic power: 120 dB
- Power supply: 12 V
- Operating temperature: -30°C +55°C
- Material: plastic
- Dimensions, mm: 100x100x100

The logo for Quadrobit, featuring a stylized white 'Q' icon on the left and the word 'quadrobit' in a white, lowercase, sans-serif font on the right, all set against a solid red background.

Video Door Bell

QB RING-1



Video controlled doorbell with the function to record video in the cloud. With the QB RING-1 assistance, you can now from anywhere in the world see who comes to visit you. When you call the door, the application Quadrobit will push you a signal to the phone. Answering you can see, talk with the guest and, if necessary, open the door remotely.

- Wide viewing angle 140°
- Built-in backup battery
- Water Resistance IP65
- Protection against unauthorized opening
- Video Quality: 640*480
- Audio: Built-in microphone
- IR range: 8 m
- Memory card: support 32G TF
- Wi-Fi: support for 802.11b / g / n
- Method for connecting Wi-Fi: QR code Smart Link / Scan
- Power supply: 5V



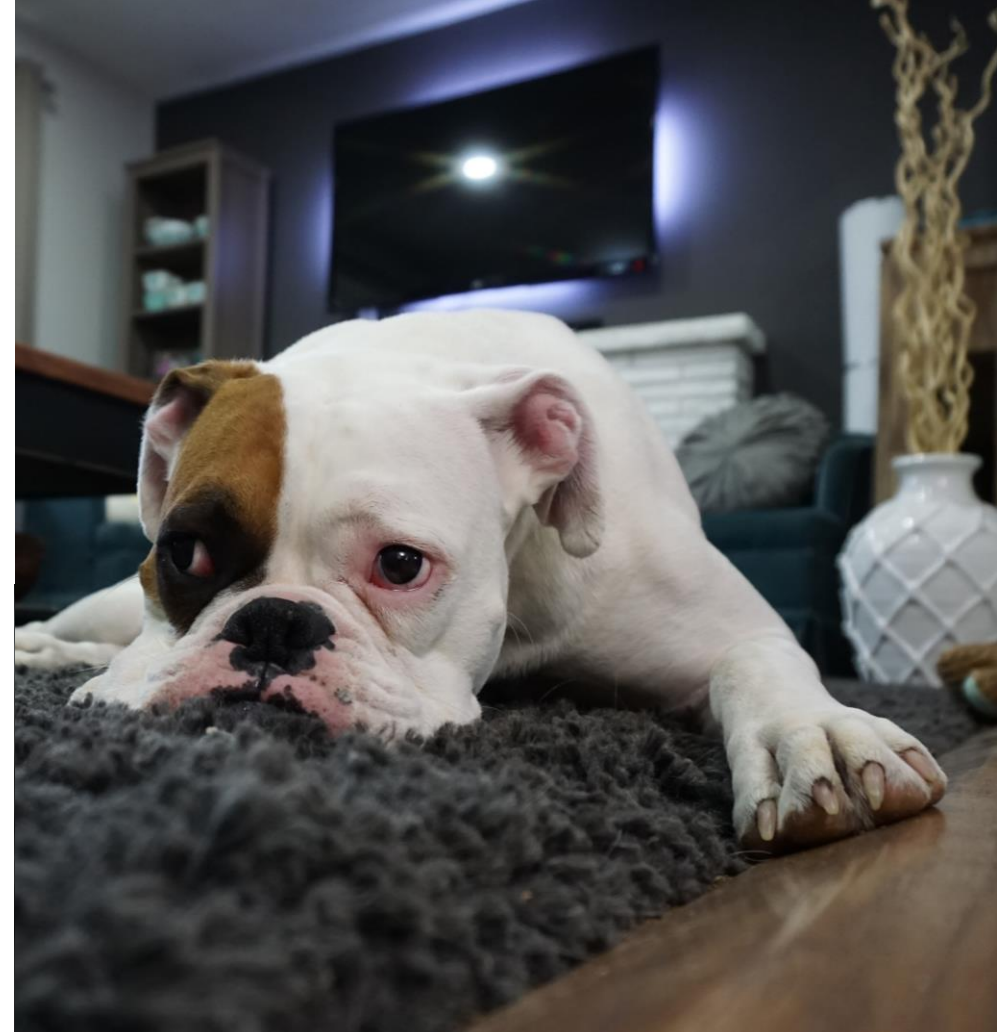
FEEDER FOR HOME PETS REMOTELY CONTROLLED

QB PET-1



Remotely controlled from the phone, a feeder for pets is something that we have been missing for so long. Wherever you are, from the phone you can talk and see your pet online, and also feed it up to 20 times a day.

- Modern design, white and black
- Material: ABS plastic, environmentally friendly and harmless
- Product type: dry food, feed diameter 1-15 mm
- Voice recording: support voice recording 10 sec, call your pet
- 2-way sound: built-in speaker and microphone, talk with your pet
- Real-time video: 1.3 megapixel HD camera with IR function,
- Feeding remotely: support for iOS and Android Smartphone APP control
- Feed configuration: per day maximum 20 servings
- Serving size: 15 g ± 2 g
- Ability to take photos and share via instant messengers
- Internal Memory: The settings are saved when the power fails
- Motor of high quality with protection, service life - 2000 hours
- Indicator: lack of feed
- Power adapter 5V 2A
- Battery backup power 3 pcs. size D (not included)
- Consumption in standby mode 5V / 120UA, 0.6W



 quadrobot

SMART HOME TECHNOLOGY



Head Quarter
Quadrotech Limited, Nicosia, Cyprus
info@quadrobit.com
www.quadrobit.com
+38 067 466 23 45

Representative offices:

Quadrotech Ukraine Ltd, Kiev, Ukraine
+380508889070
a.kornienko@quadrobit.com

Quadrotech Technology, Hong Kong
info@quadrobit.com